

**INPUT FROM STAGE I**  
Methodology Established:  
(No Hidden Assumptions, Relational Only)

Substantialism:  
"Energy is a fluid/stuff  
inside objects"

Violates Relational Origin  
Requires absolute background

Define "Energy"

T

**Definition 1.6: Energy**  
Relational measure of difference  
between states (Bookkeeping)

The Split:  
Container (Metric) + Content (Fields)  
 $G_{\mu\nu} = T_{\mu\nu}$

Violates Minimalism  
Creates hidden background artifact

Relation between  
Structure & Dynamics

T

**Principle 2.3: The Identity**  
 $\text{SPACETIME} \equiv \text{ENERGY}$   
(Structure IS Dynamics)

T

**STAGE II COMPLETE**  
Ontological Foundation Set:  
Unified Entity "WILL" Defined

**INPUT FROM STAGE II**  
Ontology: **SPACETIME  $\equiv$  ENERGY**  
(One Relational Difference  $\Delta$ )

**Derived Constraints**  
1. Closure (No leakage)  
2. Conservation (Fixed budget)  
3. Isotropy (Max symmetry)

Choose a **Closed**  
Bookkeeping Domain?

Ill-defined Domain:  
No boundary / no accounting  
 $\Rightarrow$  Leakage undetectable

Violates Closure (No leakage).  
Problem is *bookkeeping*, not geometry.

**Theorem 3.4 (Minimal Direction Carriers):**  
Carriers encode *directions of relations* (not positions).

- 1) **Directional Relation** ( $A \rightarrow B$ ):  
Requires 1 DOF  $\Rightarrow$  Carrier:  $S^1$
- 2) **Omnidirectional Relation** (Center  $\rightarrow$  Field):  
Requires 2 DOF  $\Rightarrow$  Carrier:  $S^2$

Define **State**  
on Carriers ( $S^1, S^2$ )?

Scalar Substance:  
"Energy as stuff"

Violates Relational Origin.  
A state needs internal/external reference.

**Lemma 6.1: Duality of Evolution**  
State  $\equiv$  Superposition of Orthogonal Axes:  
1) **Amplitude** (External interaction)  
2) **Phase** (Internal existence)

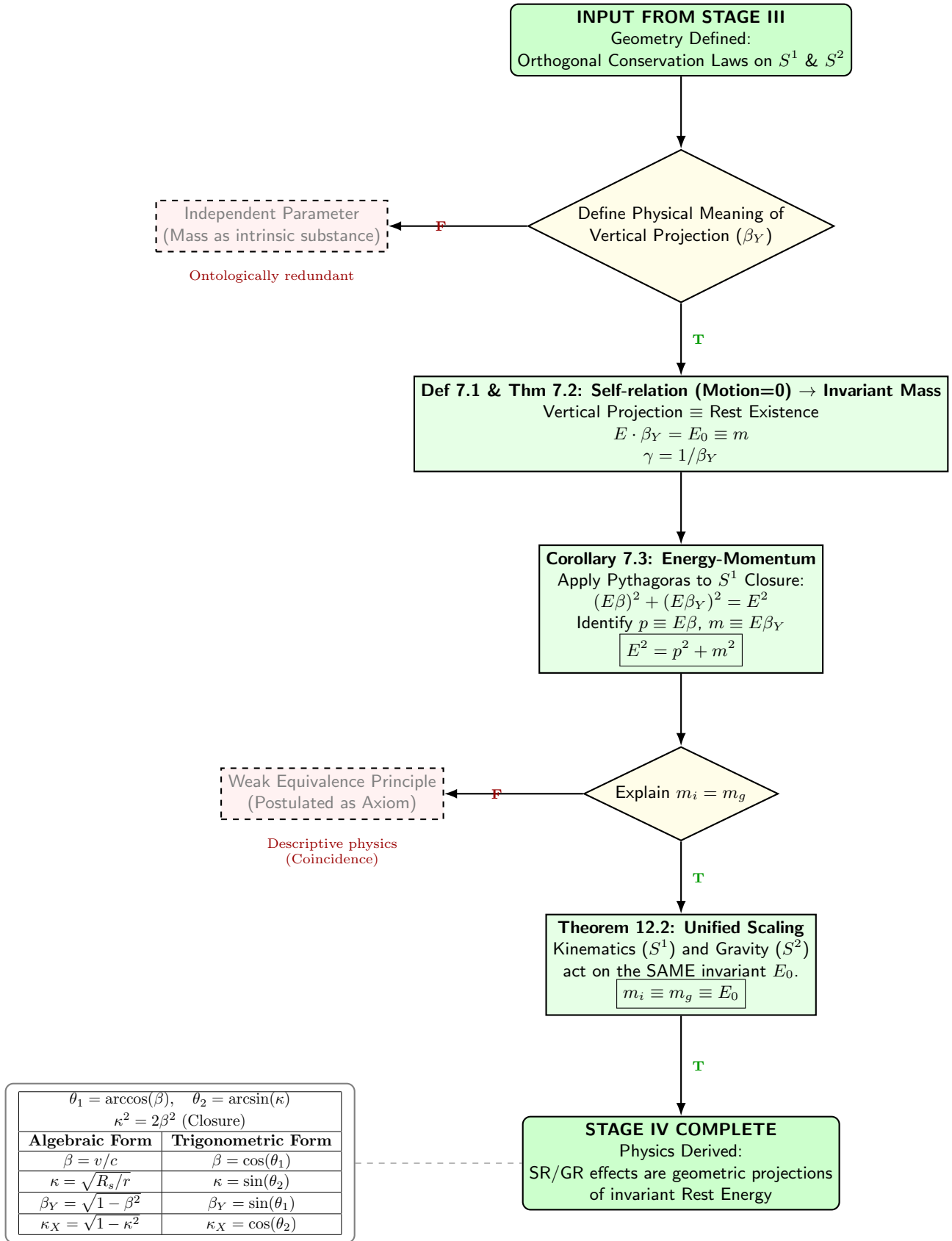
**Thm 6.2: Orthogonal Conservation**  
Fixed budget  $\Rightarrow$  fixed norm (no double counting)  
 $S^1$  (**Kinematics**):  $\beta^2$  (Motion) +  $\beta_Y^2$  (SpaceTime) = 1  
 $S^2$  (**Gravity**):  $\kappa^2$  (Potential) +  $\kappa_X^2$  (TimeSpace) = 1

**Lemma 10.1: Isotropy  $\Rightarrow$  Equal Budget per DOF**  
No preferred direction  $\Rightarrow$  no preferred DOF  
 $\Rightarrow$  budget assigns equally per independent DOF

Derive Exchange Rate  
between Active Amplitudes?

**Theorem 10.2: Energetic Exchange Rate**  
Equal budget per DOF  $\Rightarrow$   
$$\mathcal{R} = \frac{\text{DOF}(S^2)}{\text{DOF}(S^1)} = \frac{2}{1} = 2$$
  
$$\boxed{\kappa^2 = 2\beta^2}$$

**STAGE III COMPLETE**  
Geometry Established:  
Budget flows between Orthogonal Axes  
and between Direction Carriers ( $S^1 \leftrightarrow S^2$ )

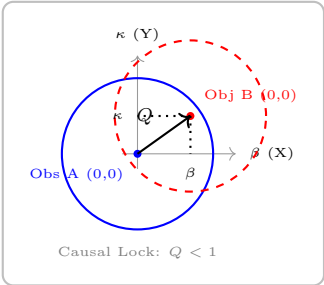


**INPUT FROM STAGE IV**  
Physics Derived:  
Invariant Mass & Unified Scaling Established

Define Interaction Measure  
(Distance/Difference)

Spatial Distance  
(Metric  $ds^2$  in background)

Violates Relational Origin  
(Sec 10)



**Sec 10: Relational Displacement**  
Self-Centering Reciprocity:  
 $Q^2 = \beta^2 + \kappa^2$   
Norm of deviation from observer

Define Interaction Mechanism  
(Dynamics)

Forces / Potentials  
(Newton, Lagrange, Hamiltonian)

Ontologically "dirty" approximations  
Collapse 2-point relation to 1-point  
(Sec 15)

**Theorem 14.1: Energy-Symmetry Law**  
Causal Continuity:  
 $\Delta E_{A \rightarrow B} + \Delta E_{B \rightarrow A} = 0$   
Transfers must sum to zero

Define "Zero Point"  
(Reference System)

Hypothetical Observer  
at Infinity ( $\infty$ )

Idealized/Non-existent.  
leads to Gauge Ambiguities

**Self-Centering Principle**  
Zero is ALWAYS the state of  
a local relational frame ( $A$  or  $B$ )

Formalize Energy Description

Formalisms  $L, H$   
Energy as intrinsic scalar  
at a single point

Ontologically "murky".  
Mathematically inflated.  
(Collapse of 2-point relation)

**Explicit Transition Cost**  
Energy as Work of Translation  
from State  $A$  to State  $B$   
 $\Delta E_{A \rightarrow B}$

**STAGE V COMPLETE**  
Dynamics Defined:  
Motion is the payment of energy cost  
to maintain Causal Symmetry

**INPUT FROM STAGE V**  
Dynamics Defined:  
Motion is Algebraic Necessity

If Method F was chosen

Result of Method T

**EFFECTS OF BAD PHILOSOPHY**  
(Descriptive Physics)

1. **Inflated Formalism:** Equations multiply to hide ontological errors.
2. **Loss of Transparency:** Meaning hidden behind coordinates.
3. **Fragmentation:** Separate constants for every domain.

**EFFECTS OF GOOD PHILOSOPHY**  
(Epistemic Hygiene)

1. **Simplicity:** Complexity collapses into geometry.
2. **Transparency:** 1 Symbol = 1 Idea.
3. **Unity:** Scale invariance from Quantum to Cosmic.

**GENERAL CONSEQUENCE:**

**"Mathematical complexity is the symptom of philosophical negligence."**

Once ontological symmetry is restored, **Nature's laws reduce to algebraic self-consistency.**

**INPUT FROM STAGE VI**  
Energy Symmetry Law Established  
( $\Delta E_{A \rightarrow B} + \Delta E_{B \rightarrow A} = 0$ )

Input: Mass ( $M$ ) & Constant ( $G$ )  
Mechanism: Forces or Metric Curvature  
Method: Differential Equations

Violates Operationality.  
 $M$  and  $G$  are not direct observables.  
(Sec 16)

Define Orbital Mechanics

**Relational Orbital Mechanics (R.O.M.)**  
Inputs: Direct Optical Projections  
1.  $\beta$  (Doppler Shift)  
2.  $\kappa$  (Gravitational Redshift)

**Theorem 16.2: Geometric Eccentricity**  
Eccentricity is the measure of "Closure Defect" ( $\delta$ ):  
$$e = \frac{1}{\delta_p^2} - 1$$
  
"Eccentricity  $\equiv$  Energy Deviation"

Solve Geodesic Equation  
$$\frac{d^2 x^\mu}{d\tau^2} + \Gamma^\mu_{\nu\lambda} \dots = 0$$

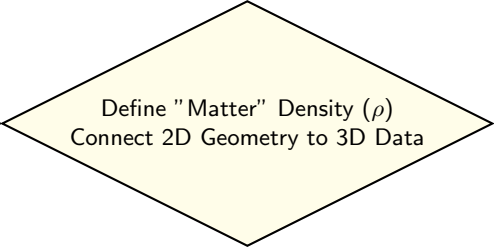
High Mathematical Inflation.  
Requires Metric Tensor.

Derive Precession ( $\Delta\varphi$ )

**Sec 16.5: Universal Precession Law**  
Pure Algebra of light "Red vs Blue" at perihelium  
$$\Delta\varphi = \frac{3\pi}{2} \frac{\kappa_p^4}{\beta_p^2}$$
  
Ratio of Potential (Red) to Kinetic (Blue) at perihelium

**STAGE VII COMPLETE**  
"Mass" is obsolete.  
Gravity is solved via Algebra of Light.  
Predictions verified (Mercury, S2, S4716)

**INPUT FROM STAGE VII**  
Dynamics is Geometric.  
Pure Algebra of Projections  $(\kappa, \beta)$



**"The Cannonball Principle"**  
Assumption: Mass is "stuff" filling  
a 3D volume uniformly.  
 $\rho = M/V$

Violates Minimalism.  
Assumes a priori 3D container.  
"Cultural Artifact" of Newton.

**Sec 17.1: The Translation Interface**  
No new assumptions.  
Translate 2D Surface Data ( $S^2$ ) to 3D Proxy.  
Normalization by sphere area ( $4\pi$ ):  
$$\rho = \frac{1}{4\pi} \left( \frac{\kappa^2 c^2}{2Gr^2} \right)$$

**The Density Identity**  
Local Density  $\equiv$  Relational Projection

$$\rho = \frac{\kappa^2 c^2}{8\pi Gr^2}$$
$$\kappa^2 = \frac{\rho}{\rho_{\max}}$$

**Sec 17.3: Intrinsic Pressure**  
If Density is Geometry ( $\kappa^2$ ),  
then Pressure is Geometric Tension.  
$$P = -\rho c^2$$
  
(Analogue to Surface Tension)

**STAGE VIII COMPLETE**  
Matter is not "stuff" in a box.  
Matter is the intensity of  
relational curvature.

### INPUT FROM STAGE VIII

Density Identity Established:

$$\kappa^2 = \rho / \rho_{\max}$$

### Sec 18: Unified Geometric Field Equation

Combine Geometry ( $R_s/r$ ) and Density Ratio:

$$\kappa^2 = \frac{R_s}{r} = \frac{\rho}{\rho_{\max}}$$

Geometry  $\equiv$  Energy State

### Mathematical Singularity

$$r \rightarrow 0 \implies \rho \rightarrow \infty$$

Breakdown of Theory

Artifact of coordinate systems.  
"Bad Philosophy" result.

Determine Behavior at Limits  
(High Energy/Small Radius)

T

### Sec 19: Natural Bounds

Geometry is closed ( $S^2$ ).

$$\kappa^2 \leq 1 \text{ (Horizon Limit)} \implies \rho \leq \rho_{\max}$$

$$\rho_{\max} = \frac{c^2}{8\pi G r^2}$$

No Singularities, only Saturation

T

### STAGE IX COMPLETE

Field is finite and self-limiting.

Black Holes are non-singular  
saturated energy states.

**INPUT FROM STAGE IX**  
Field is Consistent & Bounded

**Sec 21:  $W_{ILL}$  Invariant**  
Check consistency of all sectors:  
Energy ( $E$ ), Time ( $T$ ), Mass ( $M$ ), Length ( $L$ )

$$W_{ILL} = \frac{ET}{ML} = 1$$

Unity of Relational Structure

**Sec 20: Theoretical Ouroboros**  
The Principle (Spacetime  $\equiv$  Energy)  
generated the Field Equation.  
The Field Equation validates the Principle.  
Logical loop is closed.

**LOGOS MAP  
COMPLETE**  
Spacetime  $\equiv$  Energy

Validates  
Axiom 0